

## ▶ Advisory

Our scientific staff carry out tests and analyses, give expert opinions as well as provide advisory services. We cooperate closely with state veterinary and consumer protection offices.

## ▶ Training

- Within the framework of a dual system, LHL trains young people every year to become biology laboratory assistants and chemistry laboratory assistants as well as administration specialists.
- The training takes place in our locations in Kassel, Bad Hersfeld, Gießen and Wiesbaden.
- LHL offers internships to school and university students.

## ▶ Cooperation

In applied research and development, LHL works closely with Hessian universities and universities of applied sciences. This cooperation has led to the development of innovative testing strategies and new analytical and diagnostic methods.



## ▶ Contact



### LHL - Headquarters Gießen

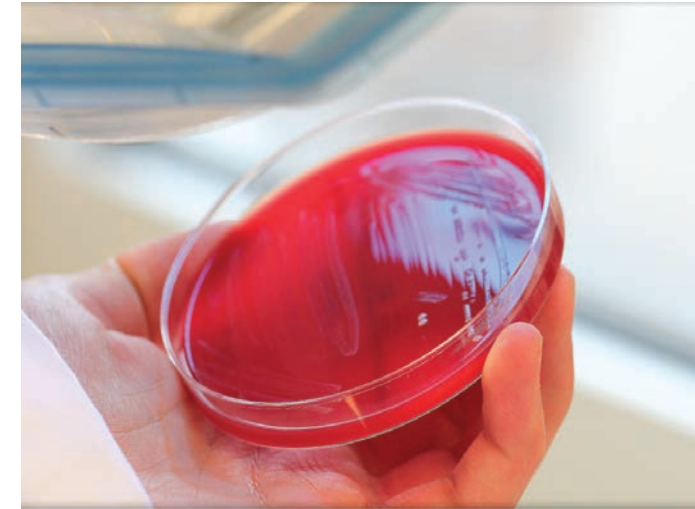
Schubertstraße 60 H13  
35392 Gießen  
Tel.: +49 (0641) 48 00 - 555  
Fax: +49 (0641) 48 00 - 5900  
E-Mail: [poststelle@lhl.hessen.de](mailto:poststelle@lhl.hessen.de)  
[www.lhl.hessen.de](http://www.lhl.hessen.de)



The Hesse State Laboratory



## Consumer Protection... our Mission



Images: blue laboratory glassware © Sebastian Duda, laboratory workers © yuri arcurs, periodic table © Dana S. Rothstein, pigs © Isma, food chart © egal, ears © Petra Reinartz, airplane © Andrew Barker - by fotolia as of October 2012 (V2.0)

## ▶ The Hesse State Laboratory (LHL)

Scientists and laboratory personnel from a variety of fields as well as administrative staff work at LHL. We are at your service throughout Hessen concerning preventative consumer protection.

Our range of services includes

- Testing, analysis and evaluation
- Giving expert opinions
- Providing advice
- Training

**As a result, consumers like you are protected.**

## ▶ Veterinary medicine

We examine not only livestock like

- Cattle, swine
- Goats, sheep
- Poultry
- Fish

But also

- Wild and zoo animals

We ensure that livestock is healthy and you as a consumer are protected against potential risks..



## ▶ Foods, cosmetics and commodities

We examine, analyse and evaluate not only

- Meat and fish
- Milk, fruits and vegetables
- Breads and baked goods
- Wine, beer and spirits

But also

- Cosmetics and
- Commodities

By using the latest techniques, we examine if foods are safe and we analyse their contents. This is done in accordance with European and national regulations.

**We support the Hessian surveillance authorities by sharing our expertise with them.**



**We control the entire food chain – from the farm to the fork**

## ▶ Agriculture and environment

We examine and analyse the following:

- Soil
- Fertilizer
- Seeds
- Fodder
- Agricultural products
- Water
- Waste
- Deposits of toxic waste



## ▶ Veterinary Border Inspection Post Hessen

Europe's biggest inspection post at Frankfurt Airport is linked to LHL's laboratories. Animals, animal products and both, animal and plant foods arriving by freight, luggage and postal packages from all over the world are examined before they are imported into the European Union.

Additionally, packages on transit from an outside country to another outside country must adhere to epizootic regulations. This ensures protection against foreign epizootics and animal diseases. Furthermore, adherence to transport and hygiene regulations is controlled.

